

Downtown Plaque Properties Walking Tour



Platted in 1825 by trader William Digby, the original town was only sixteen square blocks. Thanks to its location at the northernmost navigable point on the Wabash River, and its transportation ties to the Wabash and Erie Canal and multiple rail lines the small town grew rapidly throughout the 19th and early 20th centuries.

Lafayette has a diverse and unique collection of buildings dating from the mid 1800s to contemporary time. Examples of remaining early architecture include the John Purdue Block located at 6-12 2nd Street. John Purdue, the namesake of Purdue University, built the original row of twelve units for his business block in 1845. Four of the original twelve bays remain and now house a popular downtown bar and several office suites. The large arched windows on the west side of the building were used to load and unload merchandise on the Wabash & Erie Canal.

Other notable buildings in the downtown area include 536 Main Street (Built in the late 1860s, the Second Empire style building has served as the location of McCord's Candies since 1912), 330 Main Street (Built in 1877, and featuring a cast iron facade, the former location of the Perrin Hardware Company has ties to the Perrin neighborhood—both bear the same family name) and the Big Four Depot, constructed in 1902 and moved to its current location at Riehle Plaza in 1994.

The most spectacular and imposing piece of downtown architecture is the Tippecanoe County Courthouse. Built between 1881 and 1884, the courthouse is actually the third built on the same location. The building style is Eclectic with a strong Second Empire influence.

Downtown and the courthouse square host a variety of activities and festivals throughout the year including Dancing in the Streets, the Taste of Tippecanoe, Downtown Gallery Walks, 'Round the Fountain Art Fair, Uptown Jazz & Blues Fest, Art on the Wabash, Octoberfest, Dickens of a Christmas, OUTfest and Mosey Down Main Street to name a few.

Full a listing of downtown events, venues and festivities, visit these websites;

www.HomeOfPurdue.com

www.ReadySetGoDowntown.com

www.lafcal.com

www.tippecanoearts.org



The map displays a city grid with 40 numbered black circular markers. The grid is bounded by North St to the north and South St to the south, and Brown St to the west and Columbia St to the east. Major streets include N 1st St through N 11th St, N 2nd St through N 11th St, and S 1st St through S 11th St. The markers are numbered 1 through 40, with some numbers appearing on multiple blocks. The map also shows a river at the bottom and a highway labeled 26.

Marker Number	Location (Block)
1	Block between N 1st St and N 2nd St, east of Columbia St
2	Block between N 2nd St and N 3rd St, west of Columbia St
3	Block between N 3rd St and N 4th St, west of Columbia St
4	Block between N 4th St and N 5th St, west of Columbia St
5	Block between N 5th St and N 6th St, west of Columbia St
6	Block between N 6th St and N 7th St, west of Columbia St
7	Block between N 7th St and N 8th St, west of Columbia St
8	Block between N 8th St and N 9th St, west of Columbia St
9	Block between N 9th St and N 10th St, west of Columbia St
10	Block between N 10th St and N 11th St, west of Columbia St
11	Block between N 11th St and N 12th St, west of Columbia St
12	Block between N 12th St and N 13th St, west of Columbia St
13	Block between N 13th St and N 14th St, west of Columbia St
14	Block between N 14th St and N 15th St, west of Columbia St
15	Block between N 15th St and N 16th St, west of Columbia St
16	Block between N 16th St and N 17th St, west of Columbia St
17	Block between N 17th St and N 18th St, west of Columbia St
18	Block between N 18th St and N 19th St, west of Columbia St
19	Block between N 19th St and N 20th St, west of Columbia St
20	Block between N 20th St and N 21st St, west of Columbia St
21	Block between N 21st St and N 22nd St, west of Columbia St
22	Block between N 22nd St and N 23rd St, west of Columbia St
23	Block between N 23rd St and N 24th St, west of Columbia St
24	Block between N 24th St and N 25th St, west of Columbia St
25	Block between N 25th St and N 26th St, west of Columbia St
26	Block between N 26th St and N 27th St, west of Columbia St
27	Block between N 27th St and N 28th St, west of Columbia St
28	Block between N 28th St and N 29th St, west of Columbia St
29	Block between N 29th St and N 30th St, west of Columbia St
30	Block between N 30th St and N 31st St, west of Columbia St
31	Block between N 31st St and N 32nd St, west of Columbia St
32	Block between N 32nd St and N 33rd St, west of Columbia St
33	Block between N 33rd St and N 34th St, west of Columbia St
34	Block between N 34th St and N 35th St, west of Columbia St
35	Block between N 35th St and N 36th St, west of Columbia St
36	Block between N 36th St and N 37th St, west of Columbia St
37	Block between N 37th St and N 38th St, west of Columbia St
38	Block between N 38th St and N 39th St, west of Columbia St
39	Block between N 39th St and N 40th St, west of Columbia St
40	Block between N 40th St and N 41st St, west of Columbia St

**1****John Purdue Block**

14 N. 2nd Street, Lafayette
built in 1845, received plaque in 1990
Federal style

**2****Big Four Depot**

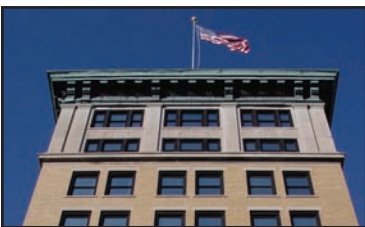
200 N. 2nd Street, Lafayette
built in 1902, received plaque in 1991
Craftsman style

**3****Wells Medicine Building**

120 N. 3rd Street, Lafayette
built in 1872, received plaque in 1991
Italianate style

**4****Tippecanoe County Courthouse**

305 Main Street, Lafayette
built in 1882, received plaque in 1992
Mixture of styles including elements of Second Empire,
Beaux Arts, Baroque, Rococo, Georgian and Neo-Classical

**5****Lafayette Life Building**

300 Main Street, Lafayette
built in 1918, received plaque in 1990
Neoclassical style

**6****David E. Ross Building**

308 Main Street, Lafayette
built in 1918, received plaque in 1991
Gothic Revival style



**7 First Merchants National Bank—
Girardot, Strauch & Co. Building**

316 Main Street, Lafayette
built in 1918, received plaque in 1992
Neoclassical style



8 Perrin Building

330 Main Street, Lafayette
built in 1877, received plaque in 1990
Italianate style



9 Handly—Sharp—DRTW Building

117 N. 4th Street, Lafayette
built in 1875, received plaque in 1991
Italianate style



10 Ruger—Dewenter—IDC Building

416 Main Street, Lafayette
built in 1862, received plaque in 1991
Beaux Arts style



11 Brown—Feuer (O.L. Clark) Building

426-430 Main Street, Lafayette
built in 1837, received plaque in 1999
Federal style



**12 Sportsman—Hirsch Brothers—
Shook Agency Building**

427 Main Street, Lafayette
built in 1923, received plaque
Chicago style



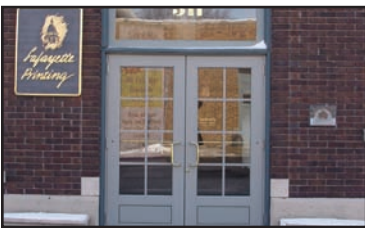
13 Clark—Clawson Building

434-436 Main Street, Lafayette
built in 1858, received plaque in 1998
Federal style



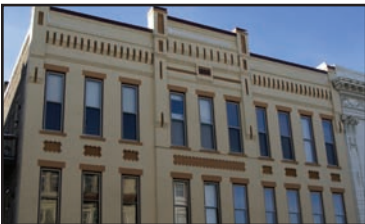
14 Heath—Pearlman Building

210-216 N. 5th Street, Lafayette
built in 1863, received plaque in 1996
Italianate style



15 Lafayette Printing Company

511 Ferry Street, Lafayette
built in 1921, received plaque in 1991
Industrial style



16 The Cracker Factory

216 N. 6th Street, Lafayette
built in 1888, received plaque in 2007
Nineteenth Century Functional style



17 Painters & Decorators Building

217 N. 6th Street, Lafayette
built in 1920, received plaque in 1991
Renaissance Revival



18 Sharp Block

514-518 Main Street, Lafayette
received plaque in 2003
Neoclassical style



19

Ball Building

527-533 Main Street, Lafayette
built in 1867, received plaque in 1994
Second Empire style



20

Mars Theatre— Long Center for the Performing Arts

111 N. 6th Street, Lafayette
built in 1921, received plaque in 1991
Neoclassical style



21

Lafayette Theater

600 Main Street, Lafayette
built in 1938, received plaque in 2007
Art Deco style



22

Carnahan—Ross—Kaplan Building

622 Main Street, Lafayette
built in 1892, received plaque in 1991
Romanesque Revival style



23

Orpheum Theater

638 Main Street, Lafayette
built in 1914, received plaque in 1998
Nineteenth Century Functional style



24

Thomas Duncan Memorial Hall

619 Ferry Street, Lafayette
built in 1930, received plaque in 1992
Georgian Revival style



25 Second National Bank—Heath—Henderson—Ross-Cole Building

848 Main Street, Lafayette
built in 1873, received plaque in 1998
Nineteenth Century Functional style



26 Douglas—Lafayette Street Railway—Madison Building

901 Main Street, Lafayette
built in 1869, received plaque
Italianate style



27 Weigle Townhouse

927 Main Street, Lafayette
built in 1899, received plaque in 1995
Neoclassical style



28 Ankeny—McCuaig House

904 South Street, Lafayette
built in 1882, received plaque in 1997
Queen Anne style



29 Christian Emdee House

712-714 South Street, Lafayette
built in 1854, received plaque in 1999
Greek Revival style



30 Gaylord—Reifers House

12 N. 8th Street, Lafayette
built in 1916, received plaque in 1999
Craftsman style



31 Alward—Lafayette Conservatory of Music—Fitzgerald House

717 Columbia Street, Lafayette
built in 1863, received plaque in
Second Empire style



32 Second Presbyterian Church—Central Presbyterian Church

701 Columbia Street, Lafayette
built in 1895, received plaque
Richardsonian Romanesque style



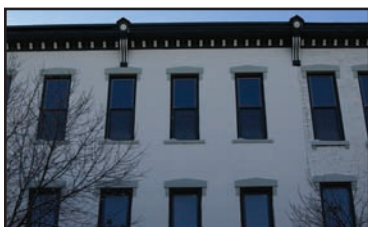
33 Falley Townhouses

620-622 S. 6th Street, Lafayette
built in 1892, received plaque in 1993
Second Empire style



34 McHugh—Trueblood Building

424 Columbia Street, Lafayette
built in 1876, received plaque in 1991
Italianate style



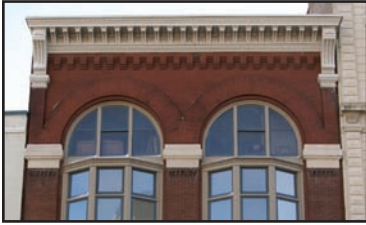
35 Vater—Wilmes Building

10 N. 4th Street, Lafayette
built in 1866-1879, received plaque in 1991
Italianate style



36 Fowler National Bank—Lafayette National Bank—INB National Bank

337 Columbia Street, Lafayette
built in 1926, received plaque in 1992
Neoclassical style



37 The Rapp Co.—Vancalin—Duffy Building

309 Columbia Street, Lafayette
built in 1881, received plaque in 1993
Romanesque Revival style



38 Coleman—Stallard & Schuh Building

301 Columbia Street, Lafayette
built in 1872, received plaque in 1991
Italianate style



39 Spring, Emerson & Co. Building

14 N. 3rd Street, Lafayette
built in 1878, received plaque in 2000
Italianate style



40 Earl & Hatcher Block

8 N. 3rd Street, Lafayette
built in 1865, received plaque in 1995
Italianate style